



TAILGATER

TOOLS NEEDED

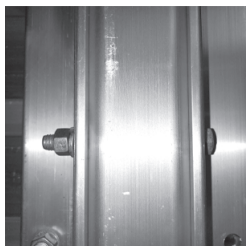
- 2-9/16 Wrench

INSTALLATION INSTRUCTIONS

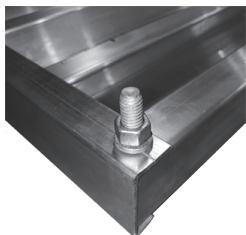
1. Attach SUPPORT ANGLES to PLANKS with 1.25" HEX BOLTS, FLAT WASHERS, LOCK WASHERS, and HEX NUTS. The SUPPORT ANGLES should run perpendicular to the PLANKS with their flanges facing out.



2. Place the HITCH TUBE between the SUPPORT ANGLES and align the holes. Attach it using 3.5" HEX BOLTS, two FLAT WASHERS (one per side), LOCK WASHERS, and HEX NUTS.

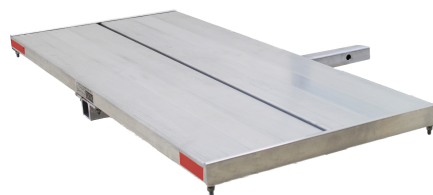


3. Attach the PLANK END CAPS to the end of the platform using 1.25" HEX BOLTS, FLAT WASHERS, LOCK WASHERS, and HEX NUTS.



INSTALLING TO HITCH

4. Insert the support tube into your 2" trailer hitch receiver and secure it with a hitch pin and clip (not included).



PARTS LIST

- A - 2 x PLANK
- B - 2 x SUPPORT ANGLE
- C - 1 x HITCH TUBE
- D - 2 x PLANK END CAP
- E - 16 x .375 FLAT WASHER
- F - 2 x .375-3.5" HEX BOLT
- G - 14 x .375-16 HEX NUT
- H - 14 x .375-1.25" HEX BOLT
- I - 14 x .375 LOCK WASHER

