



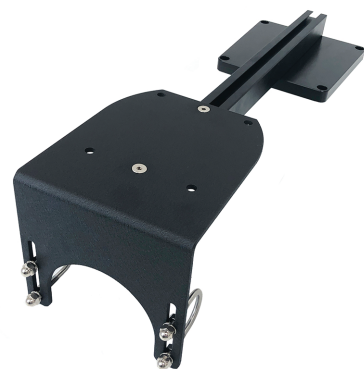
POWER POLE MOUNT FOR HOBIE® PA

TOOLS NEEDED

- Set Of Standard Allen Wrenches
- Philips Head Screwdriver
- 9/16 Open End Wrench
- 9/16 Socket Wrench

INSTALLATION INSTRUCTIONS

1. Loosely thread the FLAT HEAD SOCKET CAP SCREWS into the center holes of the ANGLE MOUNTING PLATE and attach the track nuts.
2. Slide the track nuts into the groove of the LINK CONNECTOR.
3. With factory rudder control cover removed, replace with the Boonedox RUDDER CONTROL COVER & LINK CONNECTOR assembly, using the factory screws (these are specific to the front and back holes, so don't confuse the two) only replace the front 2 screws during this step, and make sure the vertical end of the ANGLED MOUNTING PLATE is inside the handle on your kayak.
4. With the TRACK NUTS still loose, fit the U-BOLTS to the Hobie H-Rail and hand tighten.
5. Insert the rear screws to the RUDDER CONTROL COVER and tighten all four.
6. Tighten the FLAT HEAD SOCKET CAP SCREWS on the center of the ANGLED MOUNTING PLATE.
7. With the FLAT WASHER and lock washer in place, tighten the on each U-BOLT.
8. Align the base of your Power Pole with the pre-drilled holes in the ANGLED MOUNTING PLATE and bolt together.



PARTS LIST

A- RUDDER CONTROL COVER- 1
*pre-assembled to LINK CONNECTOR

B- LINK CONNECTOR- 1
*pre assembled to RUDDER COVER

C- ANGLED MOUNTING PLATE- 1

D- U-BOLT- 2

E- FLAT HD SOC CAP SCREW- 2

F- TRACK NUT- 2

G- LOCK WASHER- 4

H- ACORN NUT- 4

I- HEX NUT- 4

J- FLAT WASHER- 4

